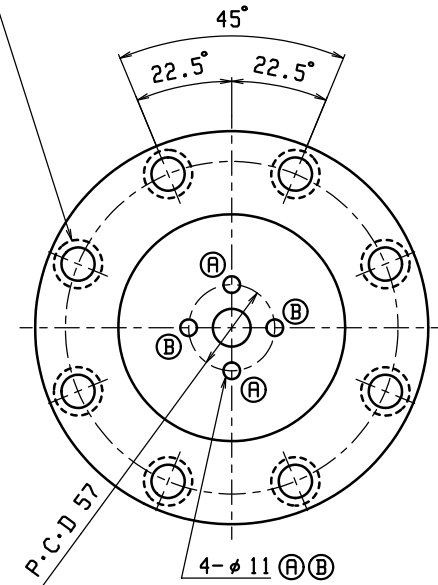


8- $\phi$  22 Through hole  
 $\phi$  32 Sopt facing 21.5 Depth



**Specifications**

Working Pressure : 13.7 MPa ( 140 kg/cm<sup>2</sup> )  
 Test Pressure : 20.6 MPa ( 210 kg/cm<sup>2</sup> )

	Date	
	Date	
	Date	
	Date	
	Date	
	Date	

MFG. No.					
MFG. No.					
MFG. No.					
MFG. No.					
DELIVERY	Q'TY	N	A	M	E

Scale	Messrs.	NAMBU STANDARD	
1/2.5	Model	New BL Type	
Approval	Feb. 22, 2010 S.Y.	Drawing No.	
Check	Feb. 18, 2010 K.N.	RJ06-0700	
Draw	Feb. 18, 2010 K.N.		
NAMBU CO., LTD.		TEL 81-3-3742-7377 FRX 81-3-3745-1021	