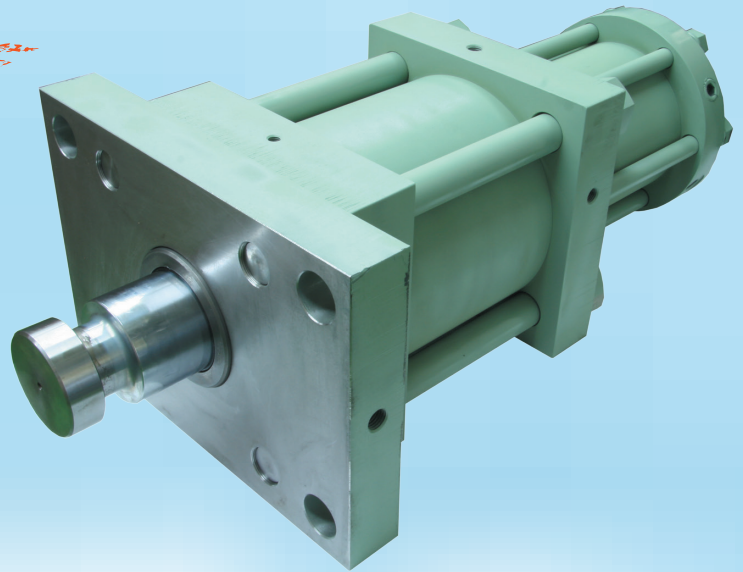


# QS Cylinder

Quick and Slow Cylinder

## **COST DOWN** Shortening cycle time!

In processing by die-casting, strong power is required for releasing mold first time in pulling out core. After releasing, strong power is no more necessary. QS cylinder is in double-deck in structure for large diameter and small diameter. At releasing mold, the core will be pulled out by large cylinder and thereafter, small cylinder will be used automatically. This will much contribute to shorten cycle time.



## **ECO** Environment friendly!

Since small cylinder will be used normally except special occasion, it's possible to save hydraulic fluid in quantity.

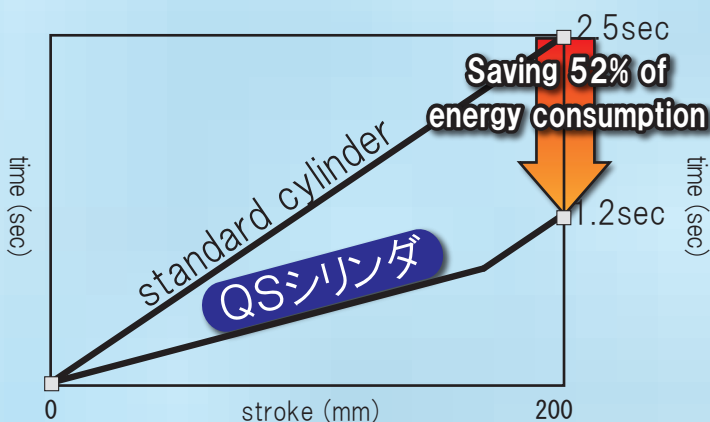
## **EASY** Plumbing is same as single cylinder!

Connection method of hydraulic pipes is in the same way as single cylinder. This product can be easily and practically introduced.

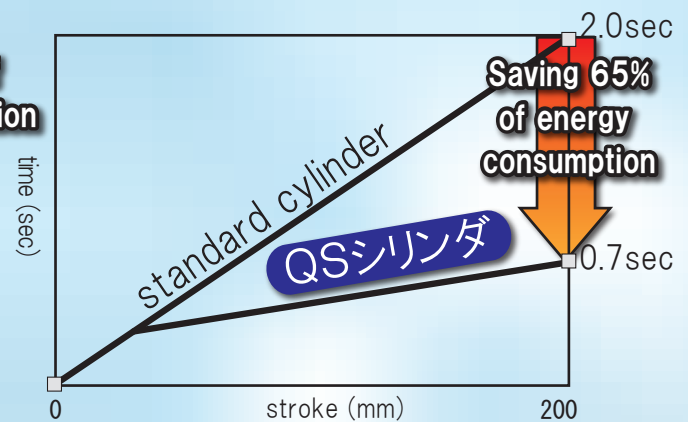
### Comparison of core movement between QS cylinder vs standard cylinder

QS cylinder: bore of cylinder  $\Phi 200/\Phi 125$ , stroke 200mm  
standard cylinder: bore of cylinder  $\Phi 200$ , stroke 200mm

#### forward movement of core



#### backward movement of core



\*1 Above is based on the assumption that discharge of pump will be 150litter/min.(2,500cm<sup>3</sup>/sec)

\*2 Above are theoretical figures without taking into account of resistivity, pressure and damage.